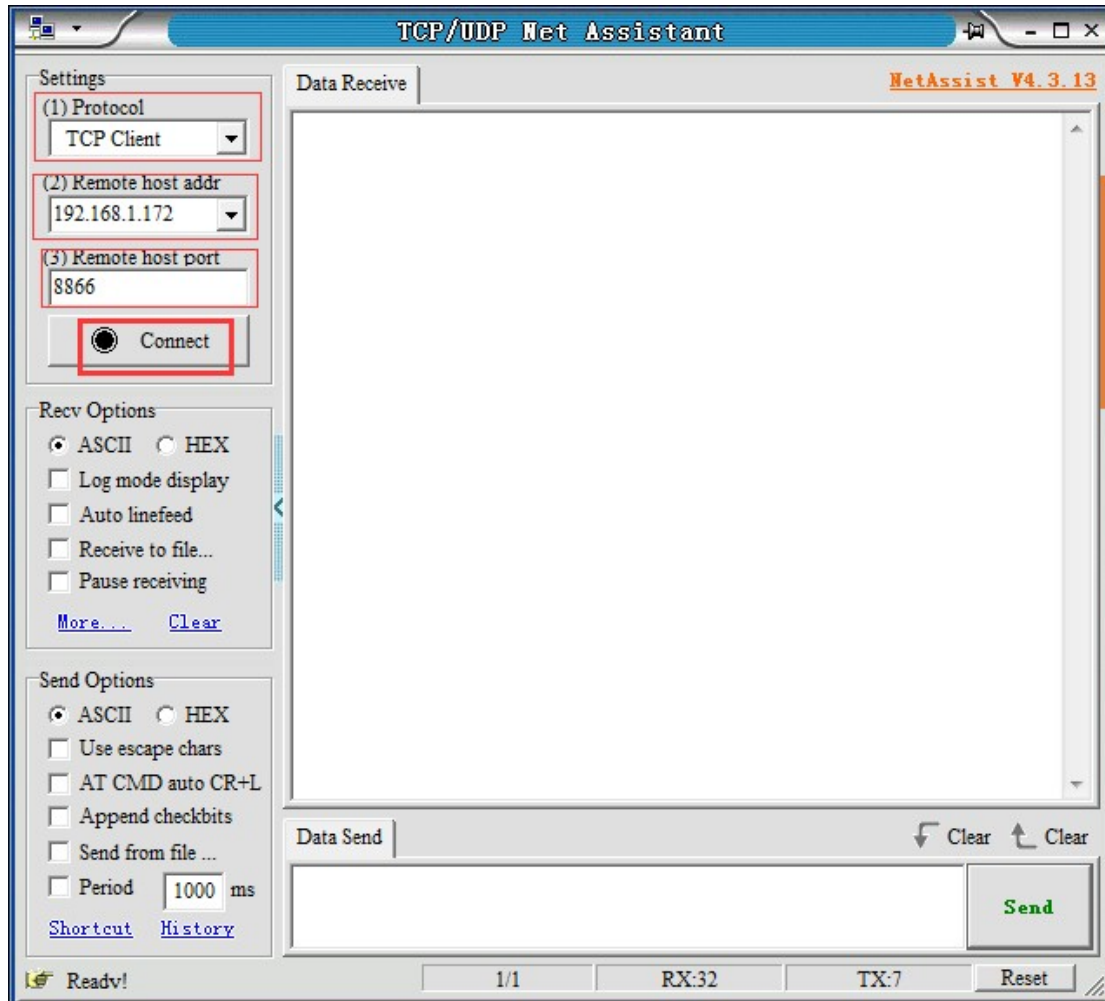


SCPI Command and Network Gadget

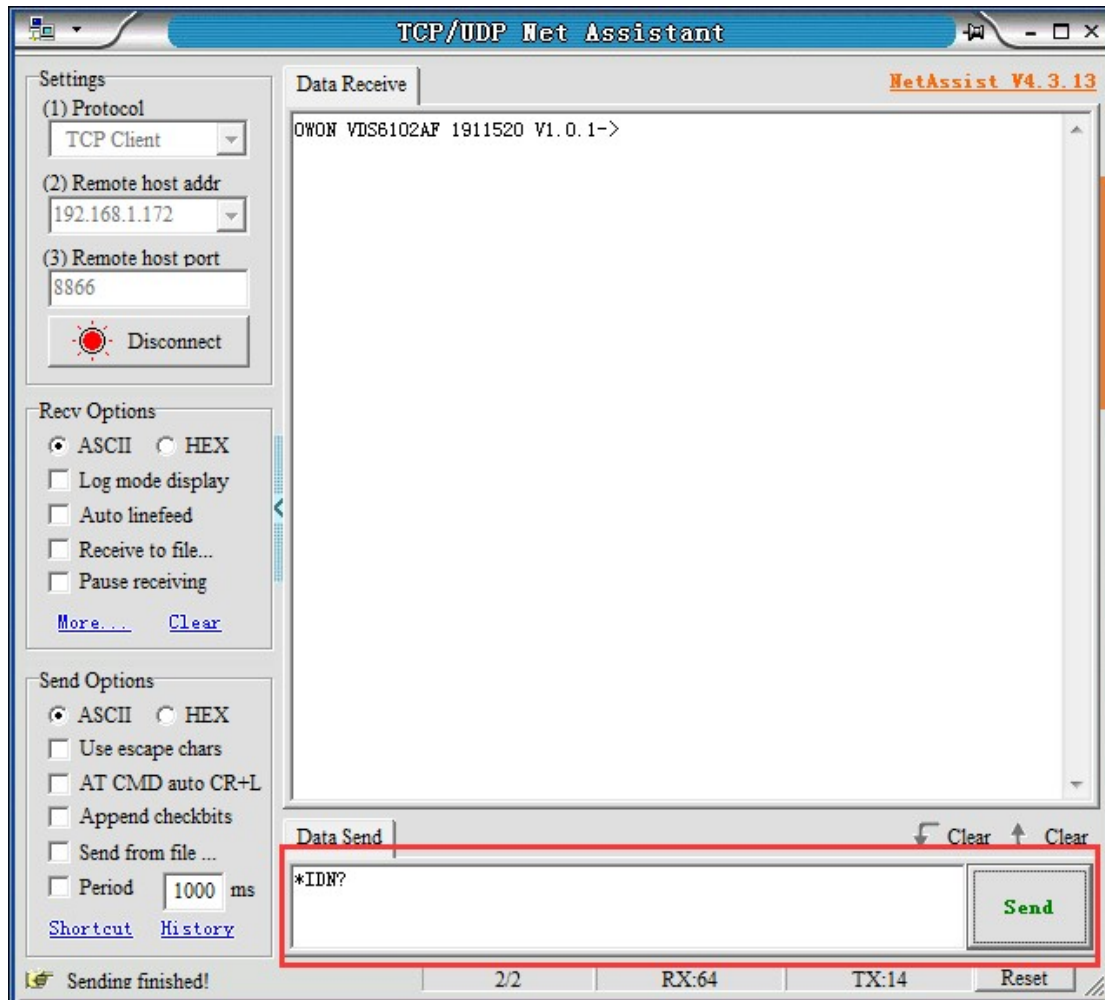
1. No need to install NI VISA driver and PC Applications.
2. Power on and connect the device to the network. Double click to open the network gadget “netassist.exe”, as shown in the following figure.



3. Select “TCP Client” as the protocol type, and the local host address will be automatically generated.
4. “Remote host addr” and “Remote host port” fill in the device address and port. Click to “Connect”, as shown in the following figure.

LAN connection, the device default address 192.168.1.172:8866

Via the device AP hotspot connection, the device default address 192.168.100.1:8866



5. Input SCPI instructions in the red box to realize network communication. (After entering the command in the red box, you must add a “carriage return” and then press “Send”. That is to say, '\n' or '\r' as the end character of the command)
6. For more SCPI commands, please refer to the VDS6000 Series programming manual.
7. NetAssist download address: <http://free.cmsoft.cn/download/cmsoft/netassist.zip>